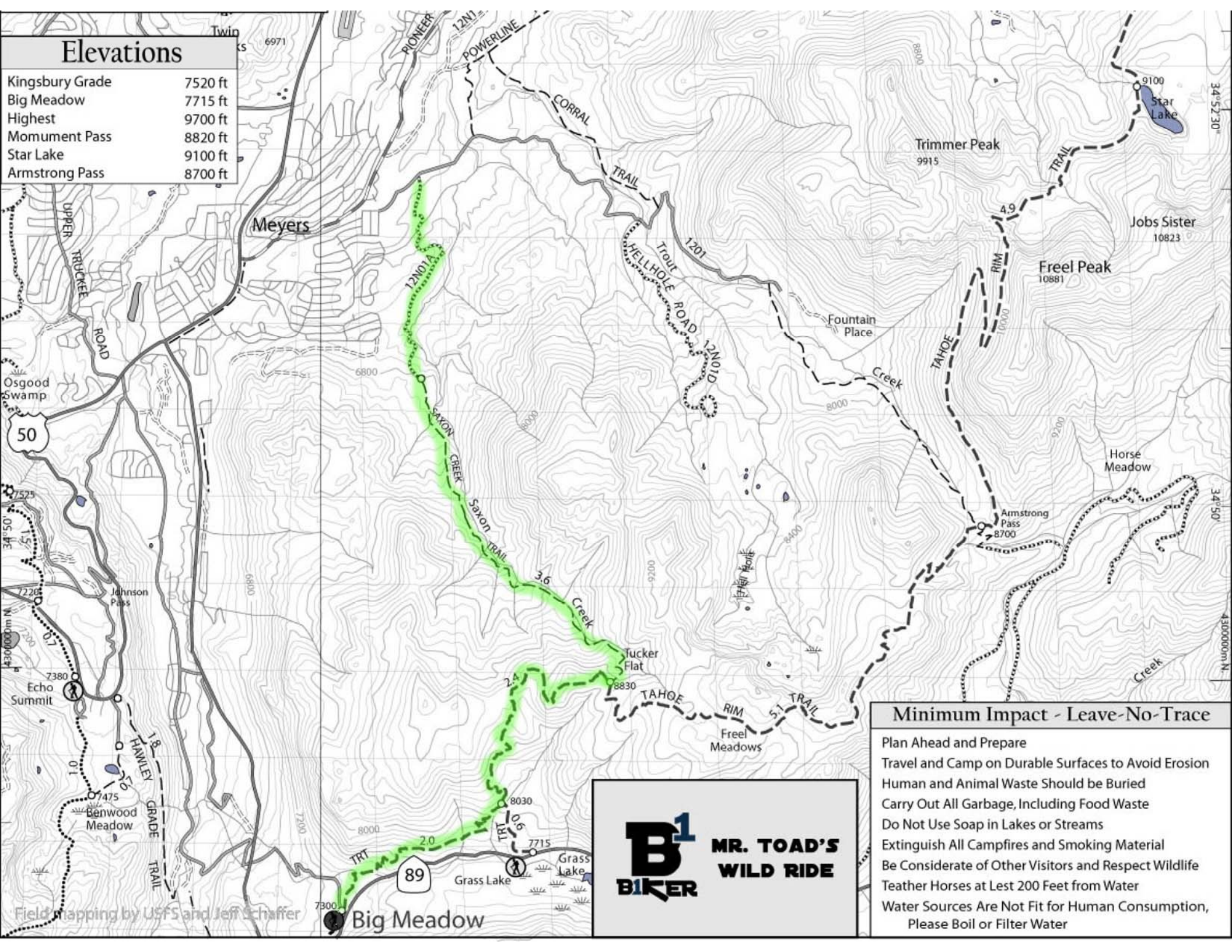


# Elevations

Kingsbury Grade	7520 ft
Big Meadow	7715 ft
Highest	9700 ft
Momument Pass	8820 ft
Star Lake	9100 ft
Armstrong Pass	8700 ft



## Minimum Impact - Leave-No-Trace

- Plan Ahead and Prepare
- Travel and Camp on Durable Surfaces to Avoid Erosion
- Human and Animal Waste Should be Buried
- Carry Out All Garbage, Including Food Waste
- Do Not Use Soap in Lakes or Streams
- Extinguish All Campfires and Smoking Material
- Be Considerate of Other Visitors and Respect Wildlife
- Teather Horses at Least 200 Feet from Water
- Water Sources Are Not Fit for Human Consumption, Please Boil or Filter Water



Field Mapping by USFS and Jeff Schaffer